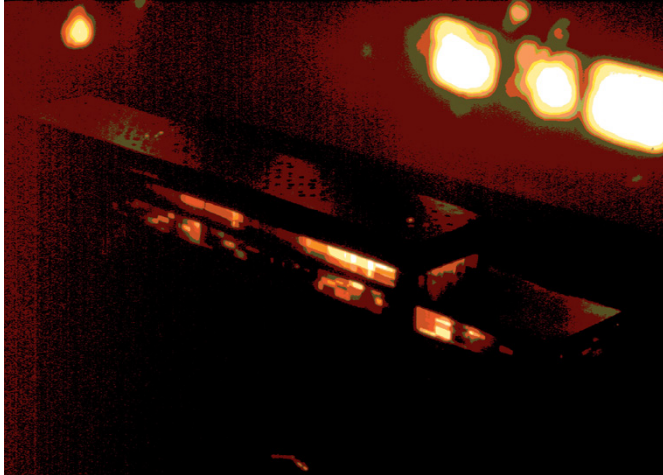


flex · bo

Open competition in 2 stages on flexible housing in the Ørestad, Copenhagen. Proposal by Uid / Henrik Valeur and engineer Ole Vanggaard, Copenhagen, 1998. Further developed in collaboration with Søren Christian Madsen, 2000.

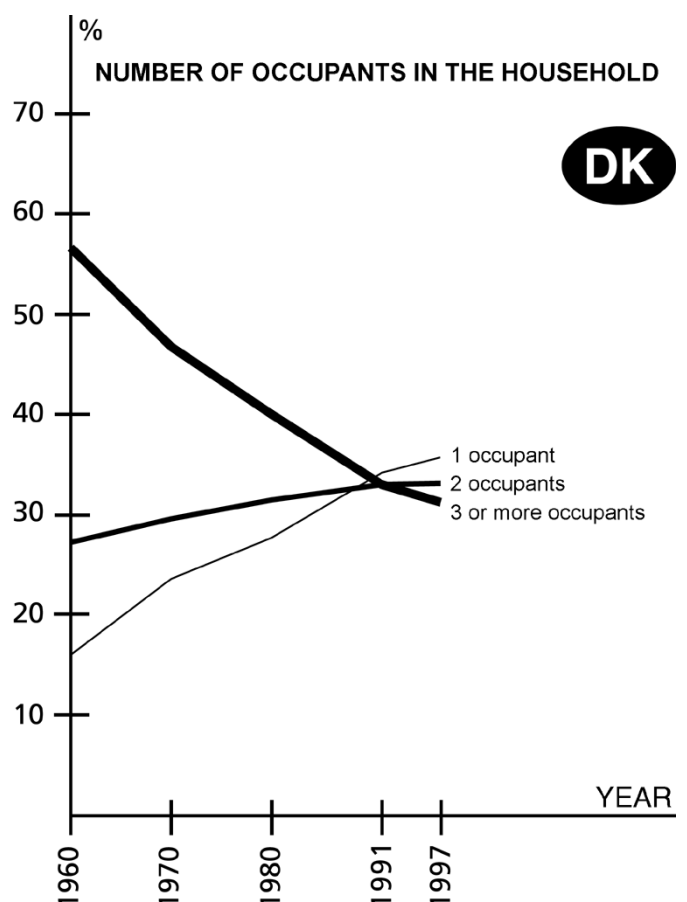


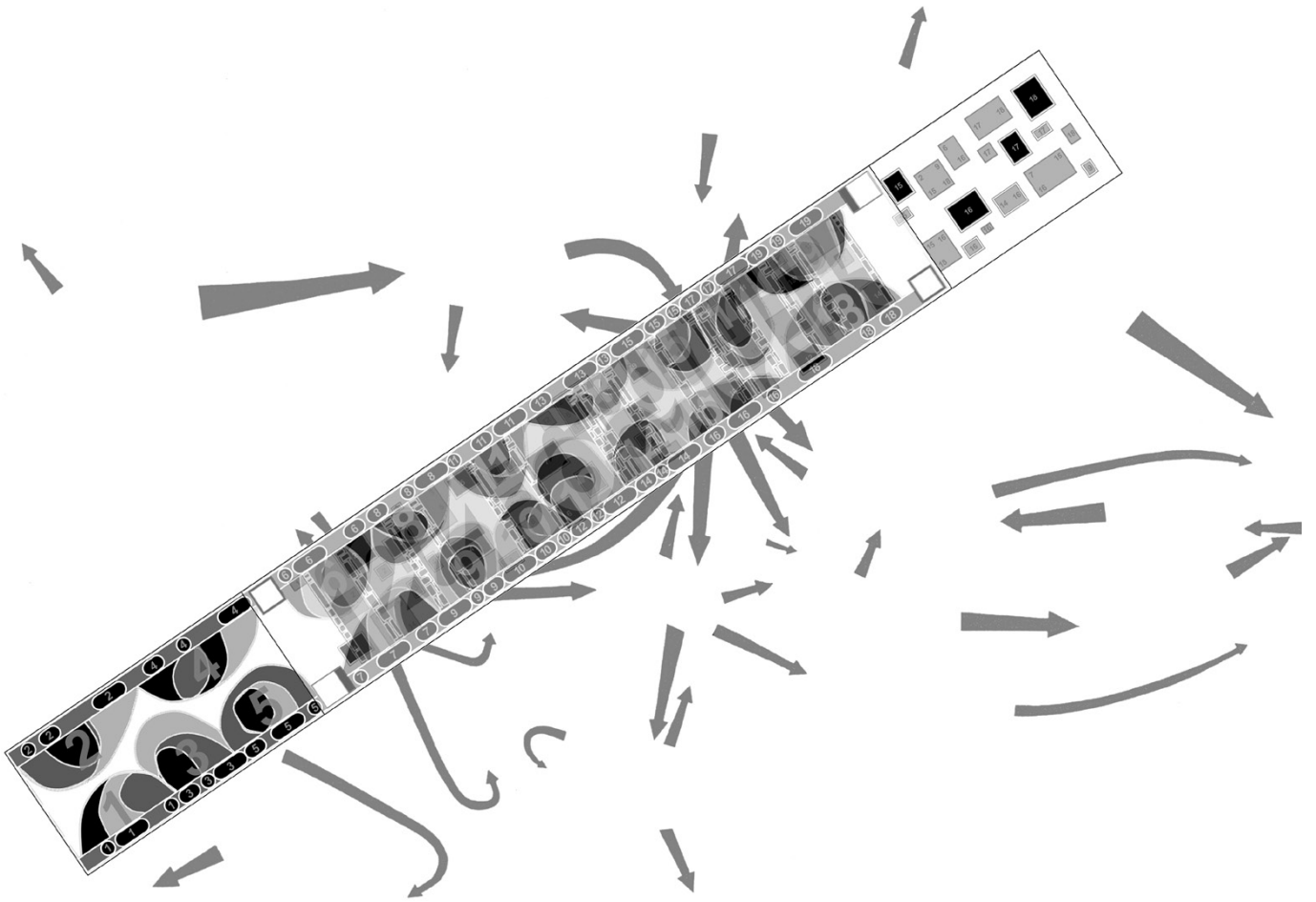
Flex-bo is a housing project for a culture of accelerated consumption. It is aimed at contemporary youth, for whom the lack of constants, safety and order is not a loss, but a cause to explore and test new forms of freedom. This individual lives an easy, unsettled life in loose networks, soon to be amplified with weekend children and frequent changes in career and of partners.

The devaluation of many former connotations associated with the dwelling is experienced as an expansion of its potentials. Today the dwelling is a space that acquires meaning through active use, with a repertoire spanning from an occasional overnight stay to an everyday workspace. It has become a base that can be left for shorter or longer periods of time, or be completely given up on an impulse.

To satisfy a broad spectrum of individual lifestyles the contemporary housing project should provide a varied supply of living conditions, with living units being adaptable to the users' fleeting mood and taste.

To enable experiments with new forms of individualised life and of social co-existence, this project is based on open spatial frameworks that necessitate large spans and result in large structural elevations. At the expense of resemblance to traditional house building, the structural dimensions make the building an equal "partner" among the large-scale enterprises in Ørestad North, a new development zone in Copenhagen.





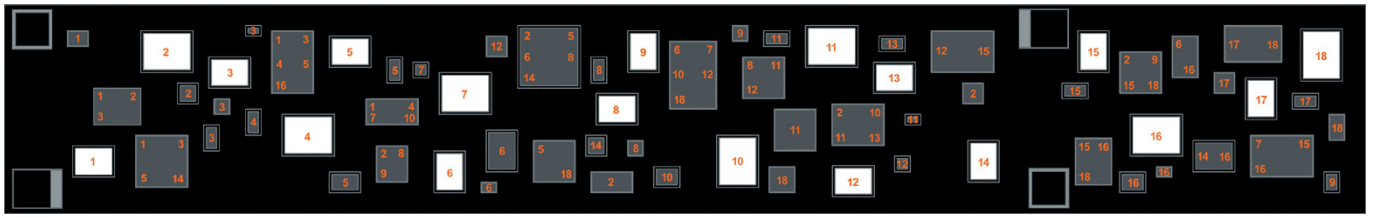
Moreover the size of the structures makes it a job for contractors who can handle big monolithic structures, rather than putting together small and repetitious elements.

The building consists of 3 open plans that can be freely furnished with dwellings ... in the same way as the open plan of the dwelling can be freely furnished with furniture! In order for this to be possible the service installations do not run vertically from the ground up, but rather side to side, allowing for plug-ins almost everywhere.

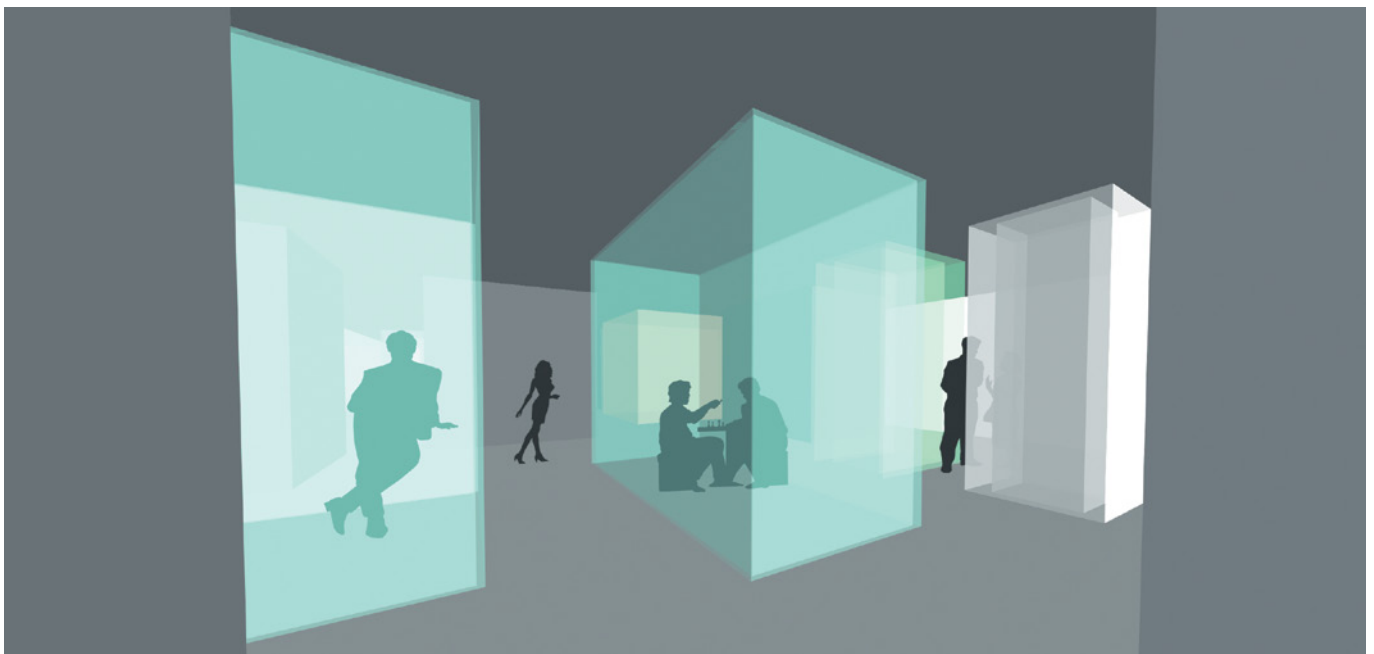
The large free span and cantilever is made possible on the upper floor by the facade walls functioning as giant girders of steel and the floor separations as cross beams in a composite construction with a steel lattice structure between the concrete decks. And on the lower floor by a number of box-like structural elements binding together the two decks to form a single 3 dimensional Virendel slab.

Service installations, heating systems and insulation are situated in the hollow space, also accessible for maintenance, in the deck between level 1 and 2, and in the perimeter walls on level 3.

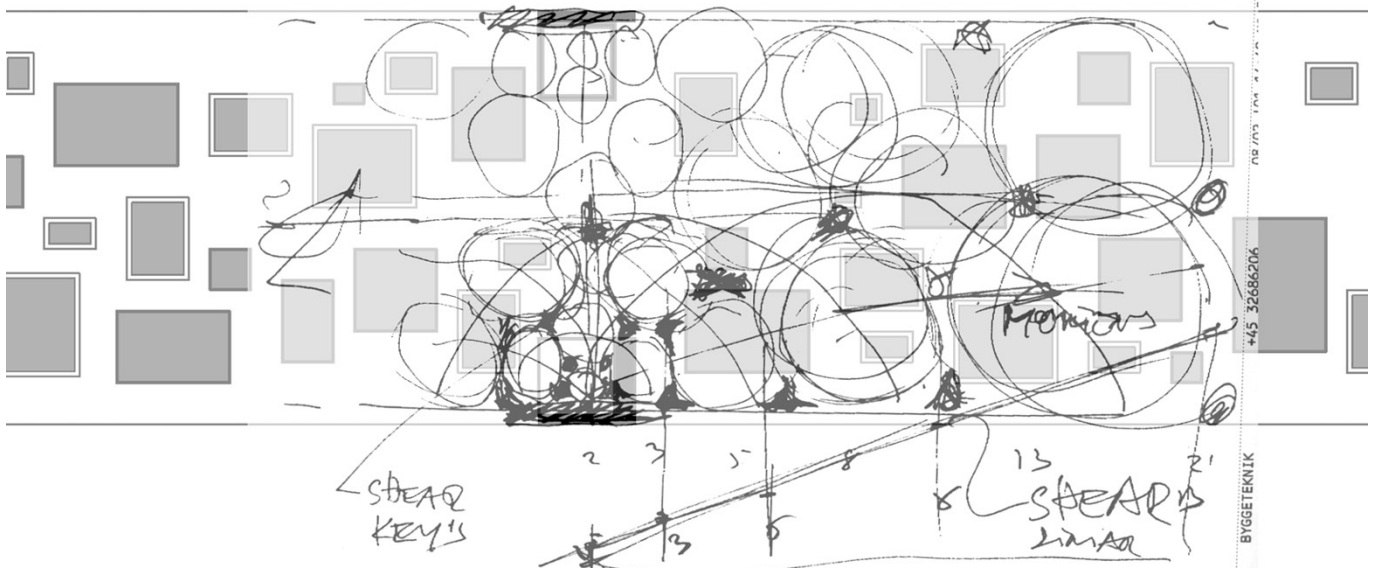
level 01



At level 1 each of the functionally determined rooms of the conventional dwelling are randomly spread out in one large space. Each room can be leased by one or more tenants for periods of time adjusted to their individual needs and financial capabilities. Since the individually composed living units of the 18 tenants are physically interspersed among each other, the tenant will at the same time be living everywhere and nowhere.



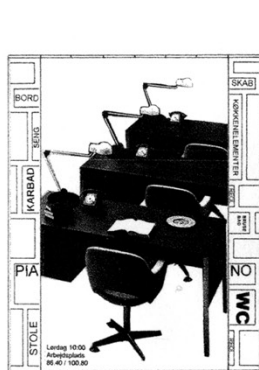
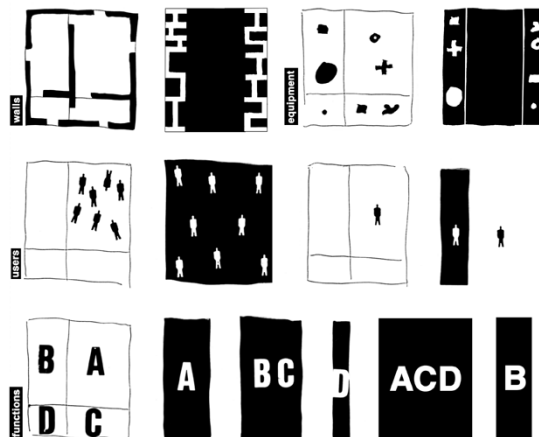
A SPECIAL VIEWPER-SANICHTSAB



level 02



Level 2 is the void between the two structural systems of the building. It contains 15 dwellings defined as the voids between 2 deep partition walls that can be shifted sideways and where all the tenant's items, devices and equipment can be deposited. The system operates via a central computer, co-ordinating - on a daily basis - the user's request for more or less space. This system makes the change of living condition an everyday experience.



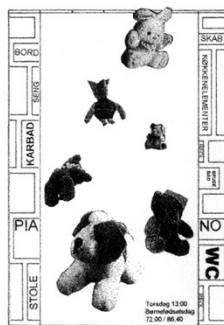
saturday 10:00
office
86.40 m2



sunday 23:00
cinema
28.80 m2



tuesday 18:00
Persian environment
43.20 m2



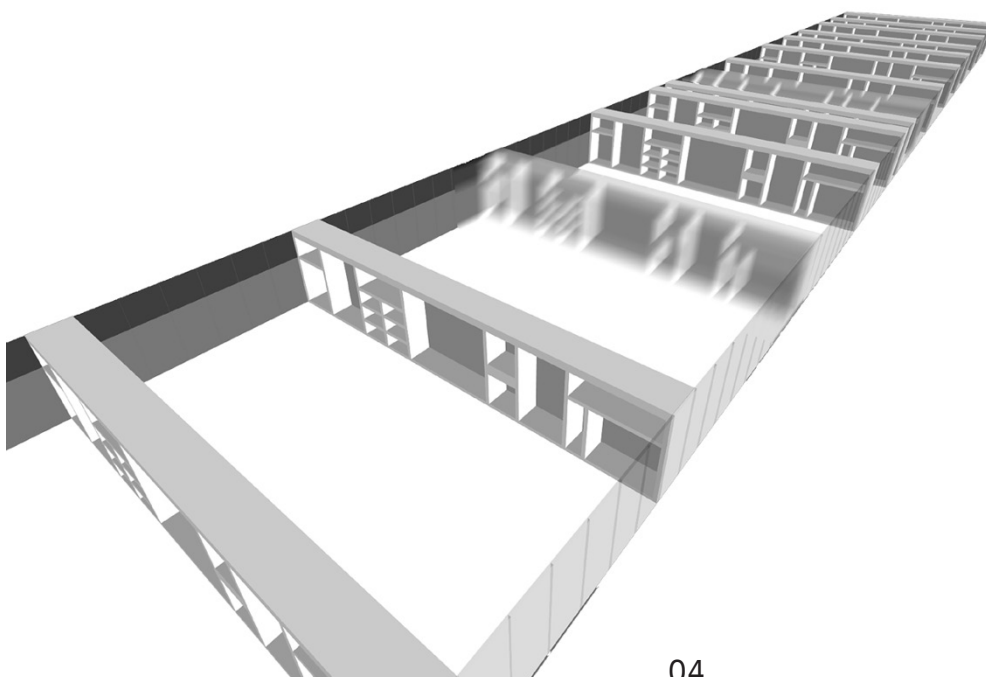
thursday 13:00
kids birthday
72.00 m2



thursday 21:00
music chamber
57.60 m2

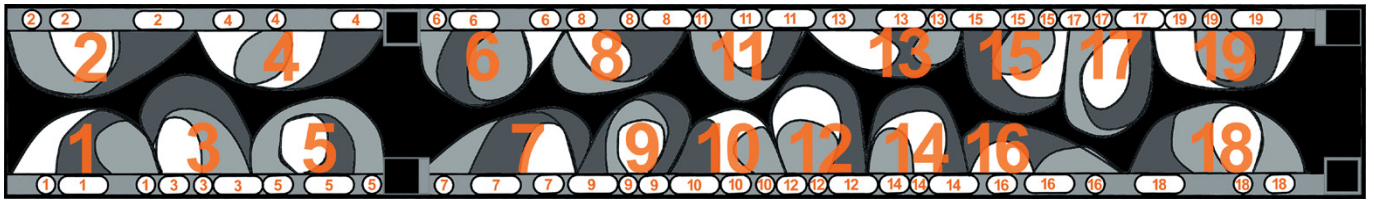


saturday 08:00
packed
0.00 m2

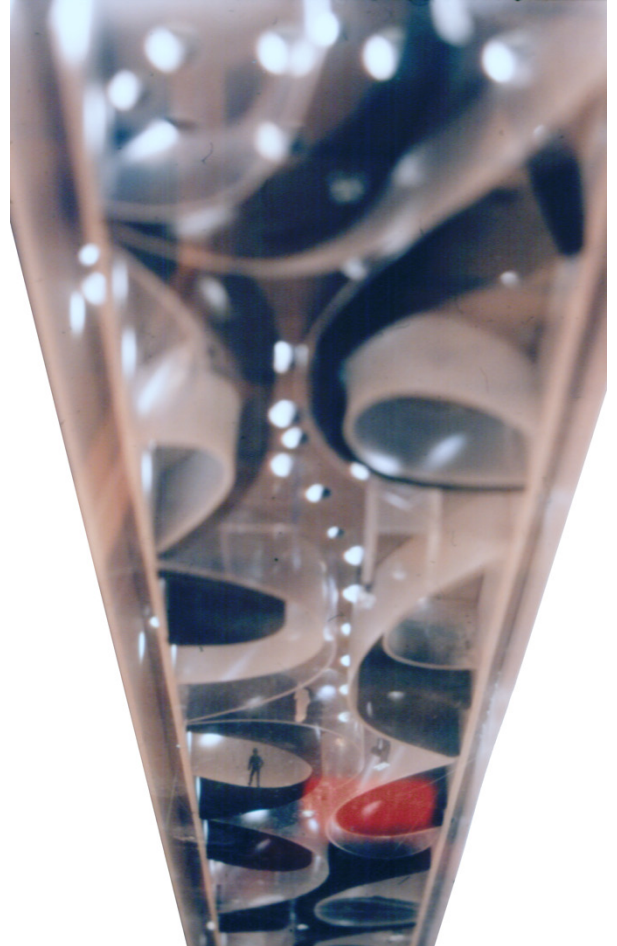


Instead of many smaller spaces with specific functions, these living units are singular, dynamic spaces with a function momentarily determined by the equipment selected from the walls. Pull out the bathtub and the TV set on a Sunday afternoon and the dwelling is a TV bath.

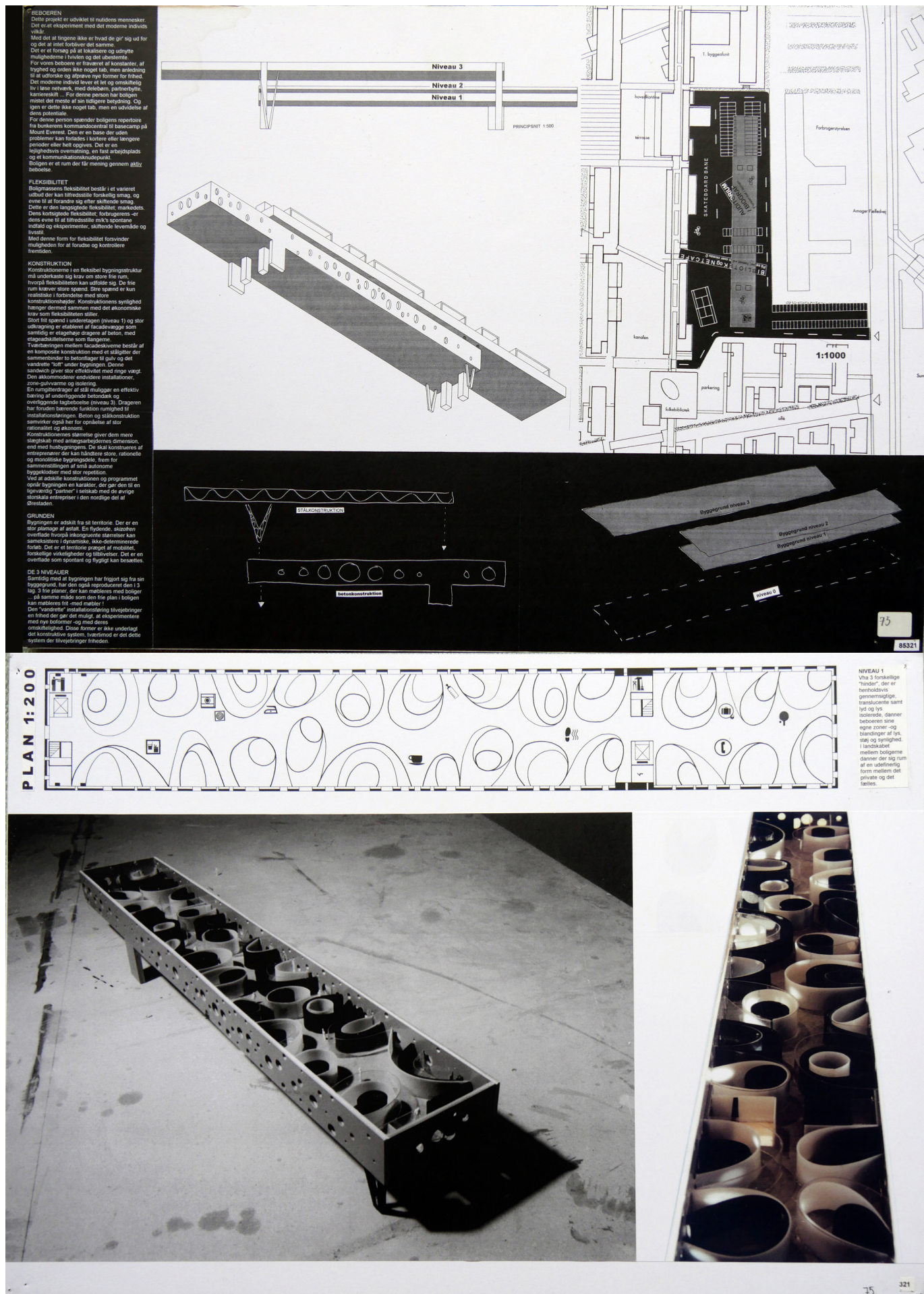
level 03



Level 3 is an open space between 2 perimeter walls filled with kitchen, bath and toilet facilities. By wrapping transparent, translucent, opaque and sound insulated membranes around them, the 19 tenants can create individual hybrids of light, noise and visibility. The membranes are constructed of light-weight materials making it easy to change their positions. The individual occupations of the open space leave an amorph corridor open for collective purposes.



Competition panels 1-2



Competition panels 3-4

